

AMERICAN INTERNATIONAL INDUSTRIES

2220 GASPAR AVENUE
LOS ANGELES, CA 90040
CHEM-TEL: (800) 255-3924

MATERIAL SAFETY DATA SHEET

PRODUCT NAME: Gigi Slow Grow **DATE:** 4/2/2004
FORMULA: 30-5473 **REV.** NEW

Section 1. Material Identification and Information

Hazardous Ingredients:

Component	CAS #	%	TOXICOLOGICAL DATA
No Hazardous Ingredients			

Section 2. Physical / Chemical Characteristics

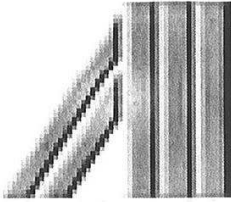
Boiling Point:	N/A	Specific Gravity:	1.00 (H ₂ O = 1)
Vapor Pressure:	N/A (mm Hg and Temperature)	Melting Point:	N/A
Vapor Density:	N/A (Air = 1)	Evaporation Rate:	N/A (NAB = 1)
Solubility in Water:	Negligible	Water Reactive:	N/A
Appearance:	White Lotion	% Volatile:	N/A
Odor:	Herbal Fragrance		(by weight)

Section 3. Fire and Explosion Hazard Data

Flash Point and Method Used: N/A
Auto-Ignition Temperature: N/A
Flammability Limits in Air % by Volume: **LEL:** N/A
UEL: N/A
Extinguisher Media: Water spray, foam, dry chemical, or carbon dioxide.
Special Fire Fighting Procedures: Firefighters should wear full protective clothing and self contained breathing apparatus.
Unusual Fire and Explosion Hazards: Explosive mixtures can form in air.

Section 4. Reactivity Hazard Data

Stability: Stable Unstable
Incompatibility (Materials to Avoid): N/A
Hazardous Decomposition: Silicon dioxide, carbon dioxide, and traces of incompletely burned carbon products.
Hazardous Polymerization: May Occur Will Not Occur



AMERICAN INTERNATIONAL INDUSTRIES

2220 GASPAR AVENUE
LOS ANGELES, CA 90040
CHEM-TEL: (800) 255-3924

MATERIAL SAFETY DATA SHEET

PRODUCT NAME: Gigi Slow Grow **DATE:** 4/2/2004
FORMULA: 30-5473 **REV.** NEW

Section 5. Health Hazard Data

Primary Routes of Entry:

Inhalation Skin Absorption Ingestion Eye Contact

Carcinogen Listed In:

NTP IARC Monograph OSHA Not Listed

Health Hazards (Resulting From Misuse or Overexposure):

Direct contact with eyes may cause temporary discomfort with mild redness. Prolonged skin contact may irritate and cause dermatitis. If swallowed, nausea may be experienced.

Medical Conditions Generally Aggravated by Exposure:

Allergy to enzyme proteins.

Emergency First Aid Procedures:

Eye Contact: Flush with plenty of water for at least 15 minutes. If redness, itching, or burning sensation develop get medical attention.
Skin Contact: Wash material off with plenty of soap and water. If redness, itching, or burning sensation develops, get medical attention.
Inhalation: Remove person to fresh air. If not breathing, give artificial respiration. If breathing is difficult, give oxygen and get medical attention.
Ingestion: Give one or two glasses of water to drink. If gastrointestinal symptoms develop, seek medical attention. Do not induce vomiting unless directed by a physician.

Section 6. Control and Protective Measures

Respiratory Protections (Specific Type):

No special procedure.

Protective Gloves: Rubber or vinyl.

Eye Protection: Use proper protection - safety glasses as a minimum.

Ventilation to be Used:

Local Exhaust Mechanical

Other Protective Clothing and Equipment:

Eye wash station in work area. Avoid breathing vapors. Use only with adequate ventilation. Do no take internally.

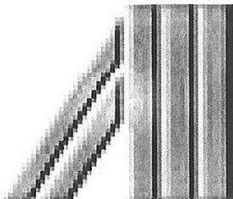
Hygienic Work Practices:

Good Manufacturing Practices.

Section 7. Precautions for Safe Handling and Use / Leak Procedures

Steps to be Taken if Material is Spilled or Released:

Use absorbent material to collect and contain for salvage or disposal. Remove all source of ignition and wear proper protection equipment.



AMERICAN INTERNATIONAL INDUSTRIES

2220 GASPAR AVENUE
LOS ANGELES, CA 90040
CHEM-TEL: (800) 255-3924

MATERIAL SAFETY DATA SHEET

PRODUCT NAME:	Gigi Slow Grow	DATE:	4/2/2004
FORMULA:	30-5473	REV.	NEW

Waste Disposal Methods:

Observe all federal, state, and local regulations regarding waste disposal.

Precautions to be taken in Handling and Storing:

Store in cool, dry place. Do not expose to light or heat. Wear safety spectacles and gauntlets when handling. Temperature precautions; do not exceed 100°F, do not freeze (under 33°F.)

Other Precautions and/or Special Hazards:

None